The background is a dark, almost black, textured surface. It features a faint, embossed map of the world, with continents and major landmasses visible. The texture appears to be that of a stone or metal relief, with subtle variations in tone and shading that give it a three-dimensional quality. The map is centered and occupies most of the frame.

Kimi
2022-2024
selected works

Kimi's work is heavily inspired by their interest in flowing shapes and body horror. Oil painting and tattooing in greyscale and dark tones serve as the main media to release the sombre worlds forming in their mind.

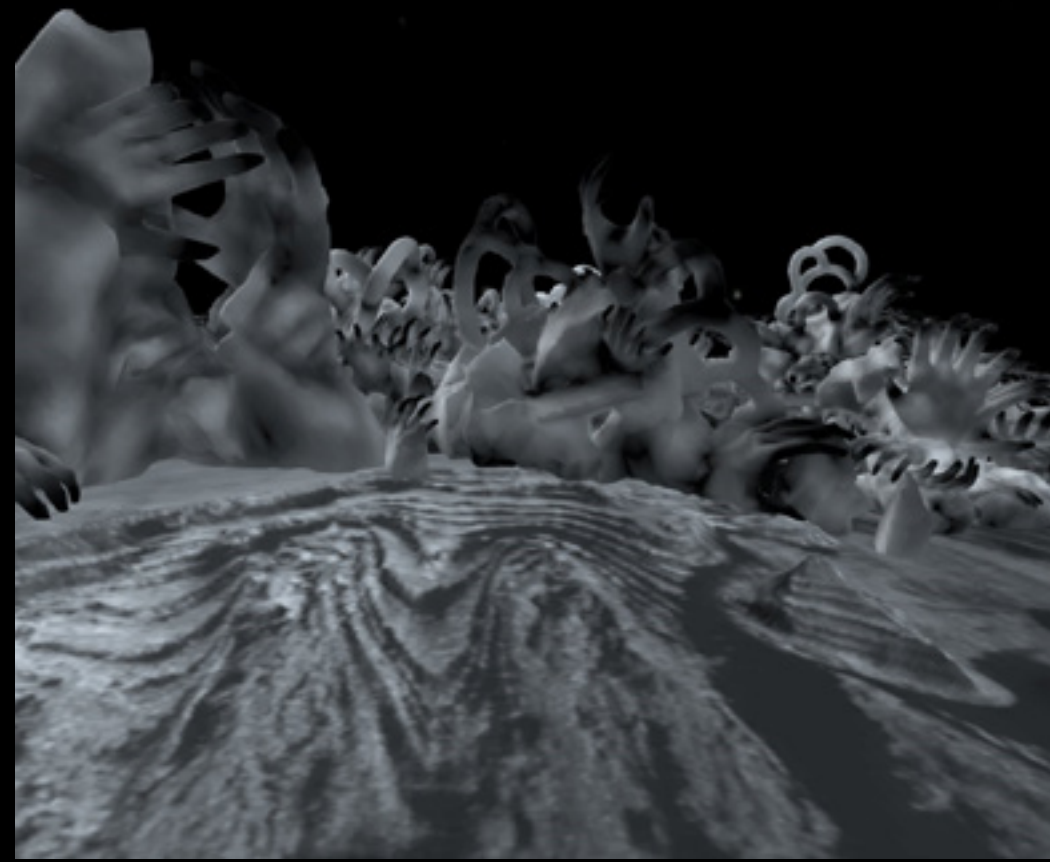
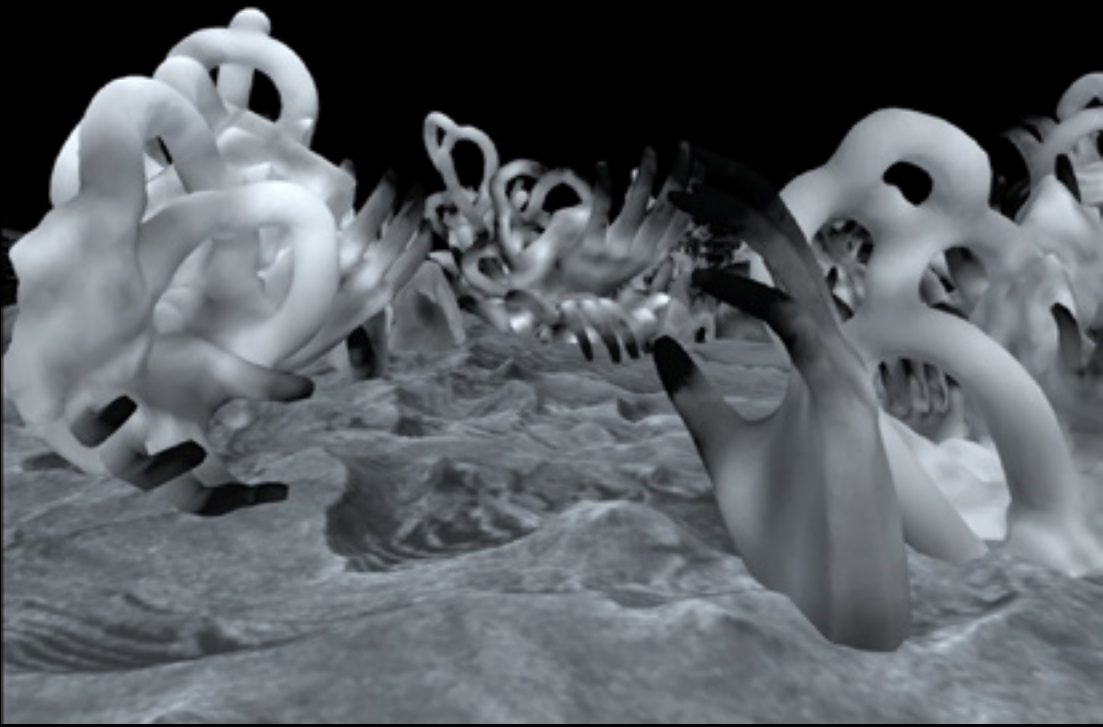
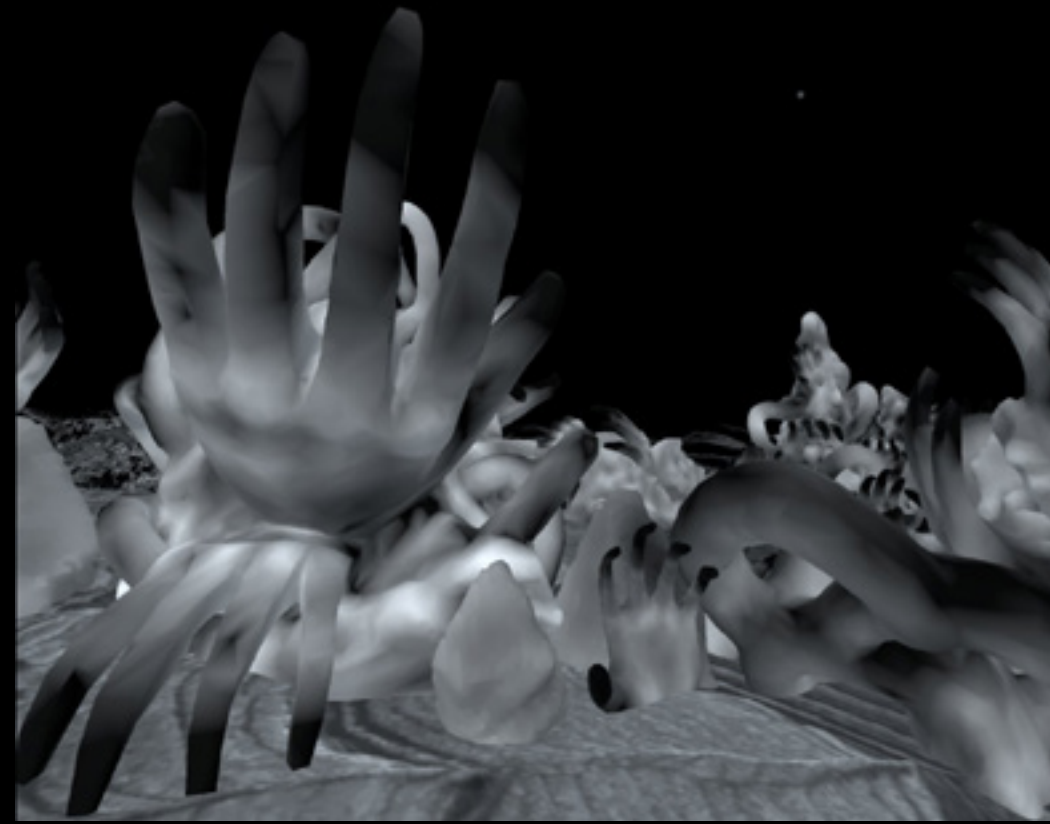
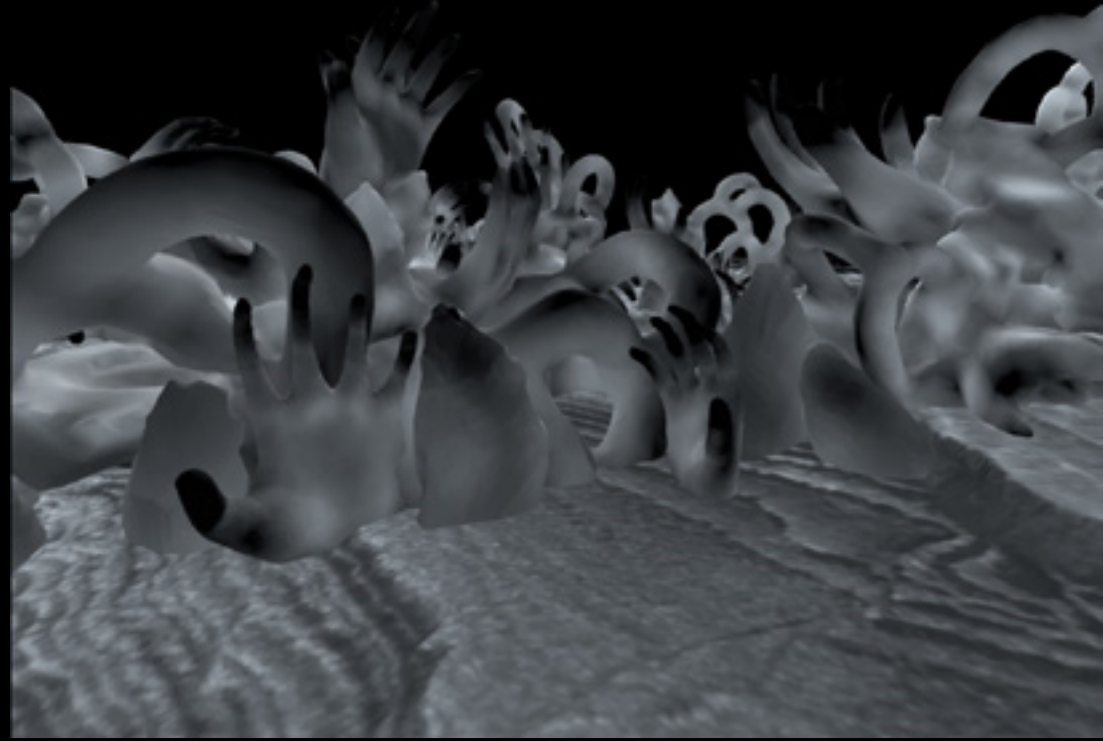


internal
150 x 120cm
oil and acrylic on tarpaulin, wire, newspaper, tape
2024





Hands
VR project
made with Adobe Medium, Sketchfab, Spatial.io,
Oculus Quest 2 VR headset
2024

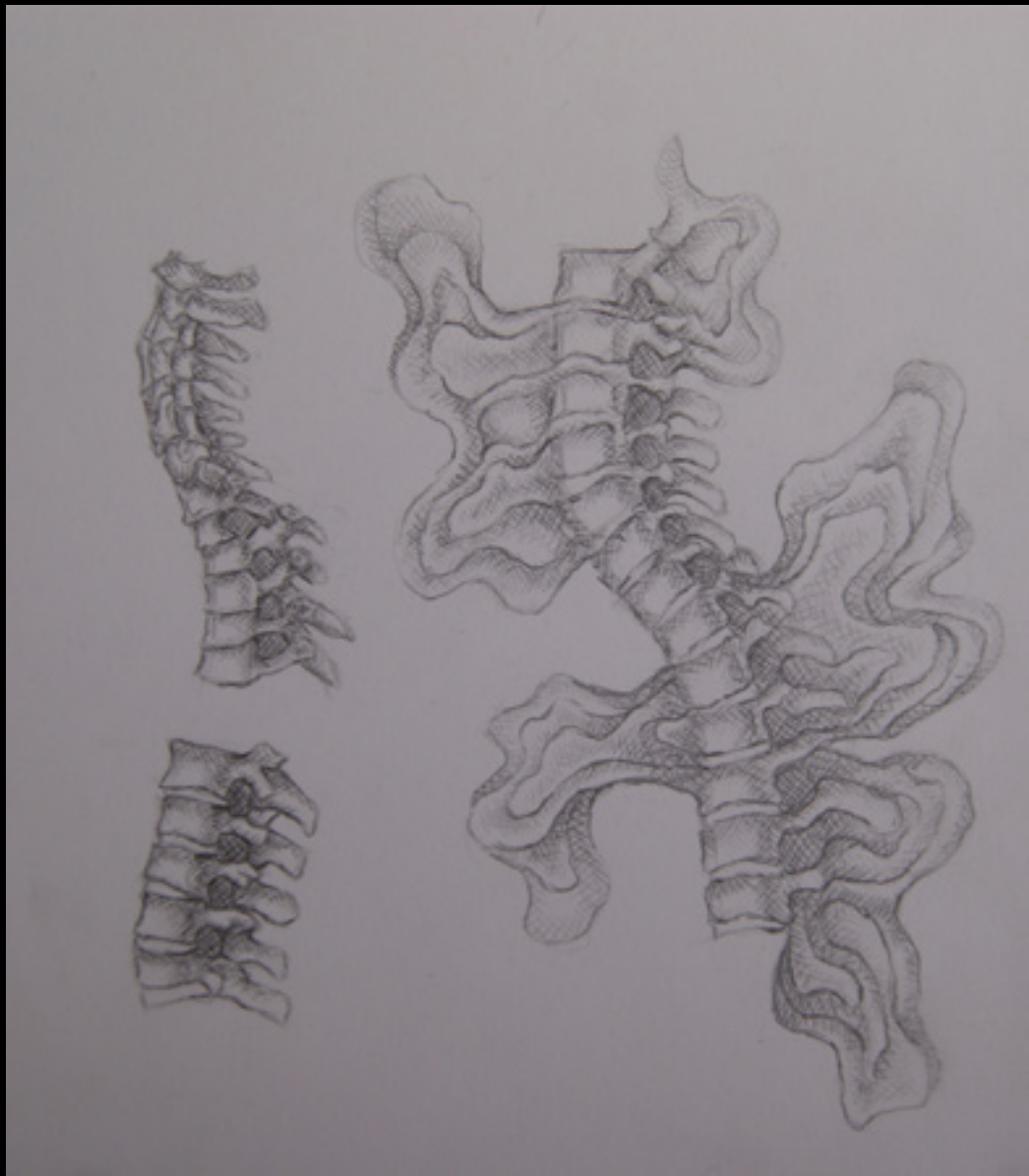
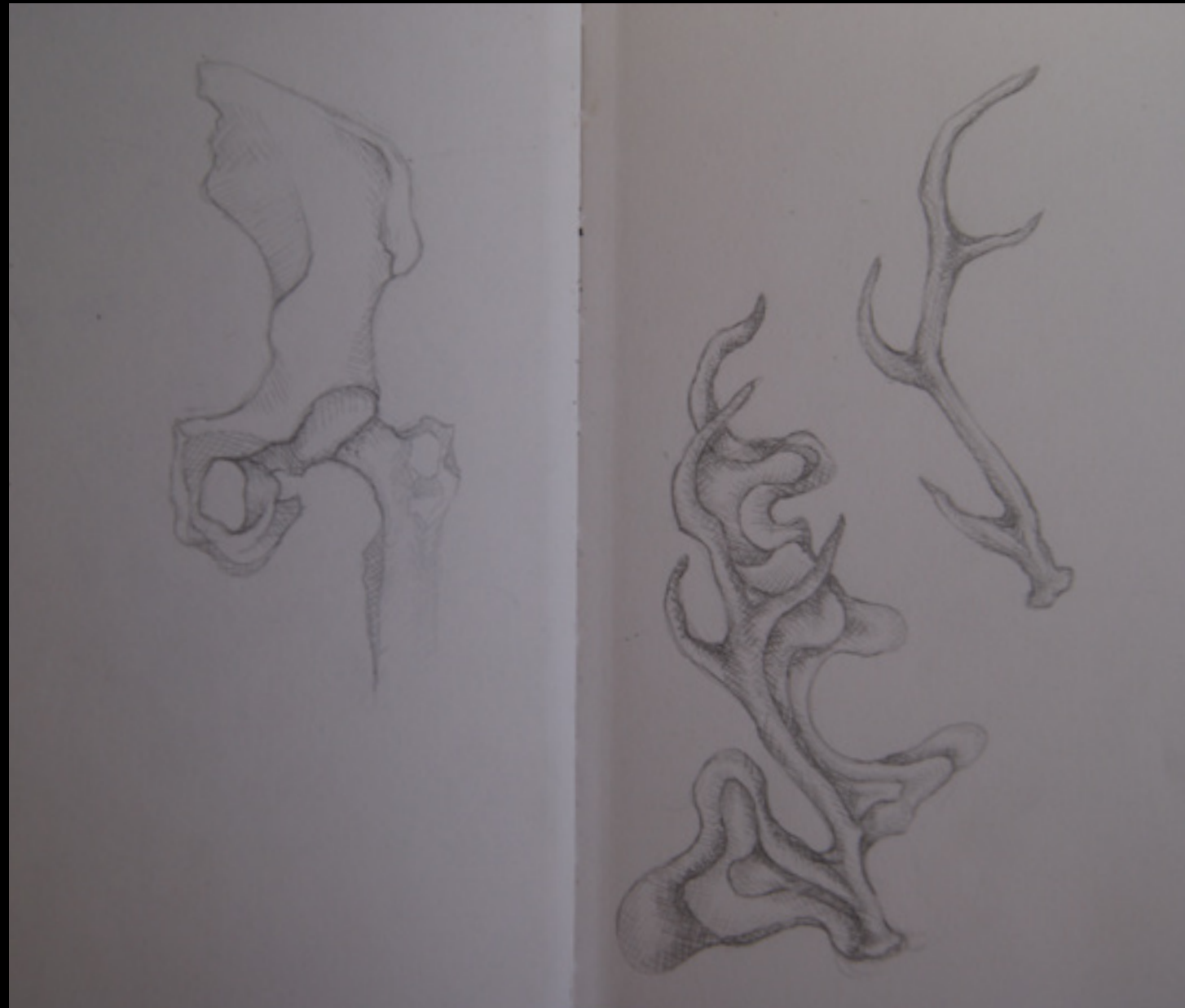
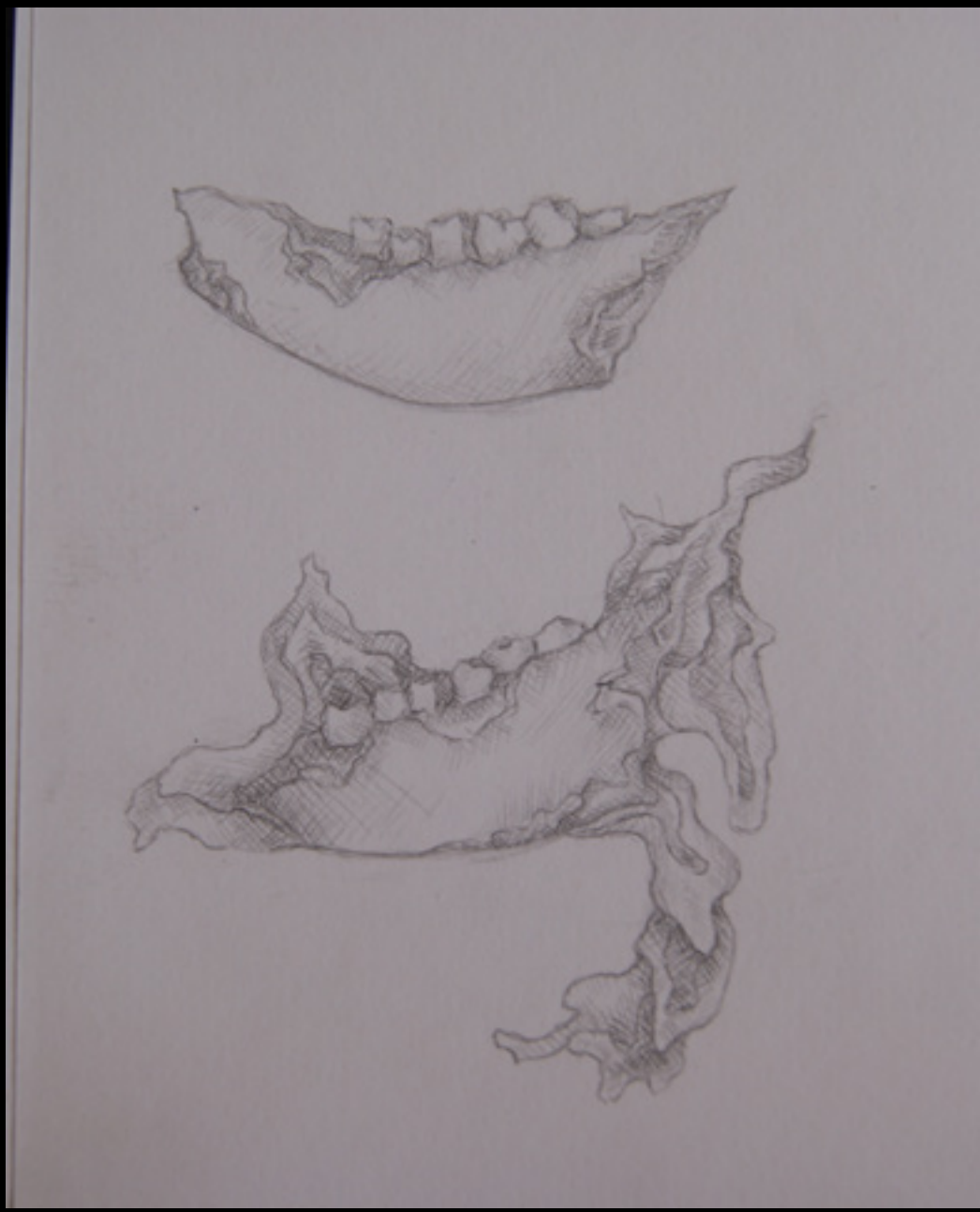




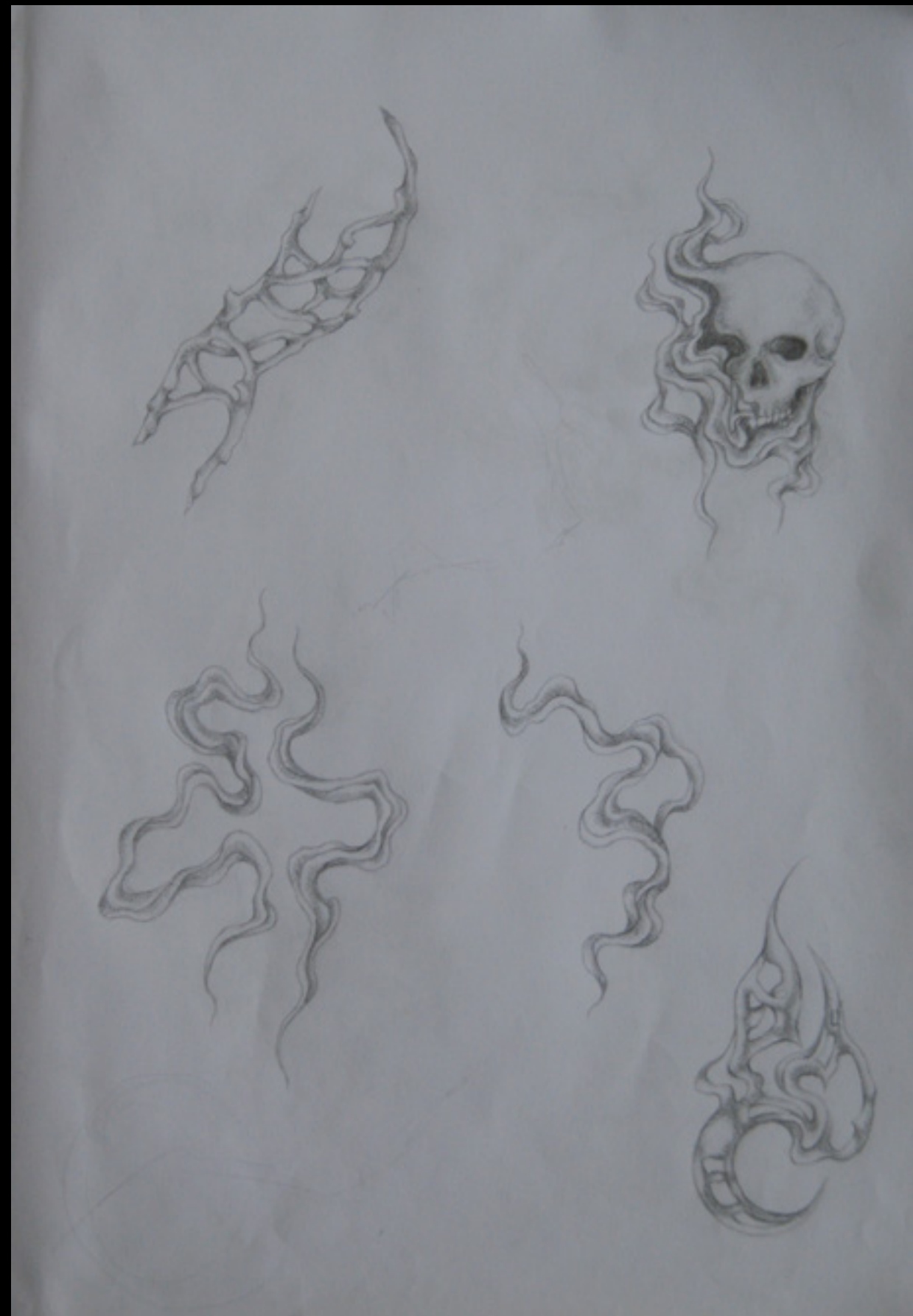
branches
10 x 2,5cm
ink on skin
2024



witch
13 x 8cm
ink on skin
2024



sketches
various sizes
pencil on paper
2023



tattoo flashes
various sizes
pencil on paper
2024



Wires
70 x 30cm
oil on aluminium
2023



body parts
100 x 70cm
oil and acrylic on wood
2022



abyss
28 x 14 x 10cm
acrylic on clay
2022



Contact

@kim.i.nk

kimi.julie@hotmail.com

+41 79 277 40 95

Education

2023- Bachelor Fine Arts HSLUdfk
2022-2023 Propädeutikum sfgb Biel
2020-2021 Education as sfx-makeup artist